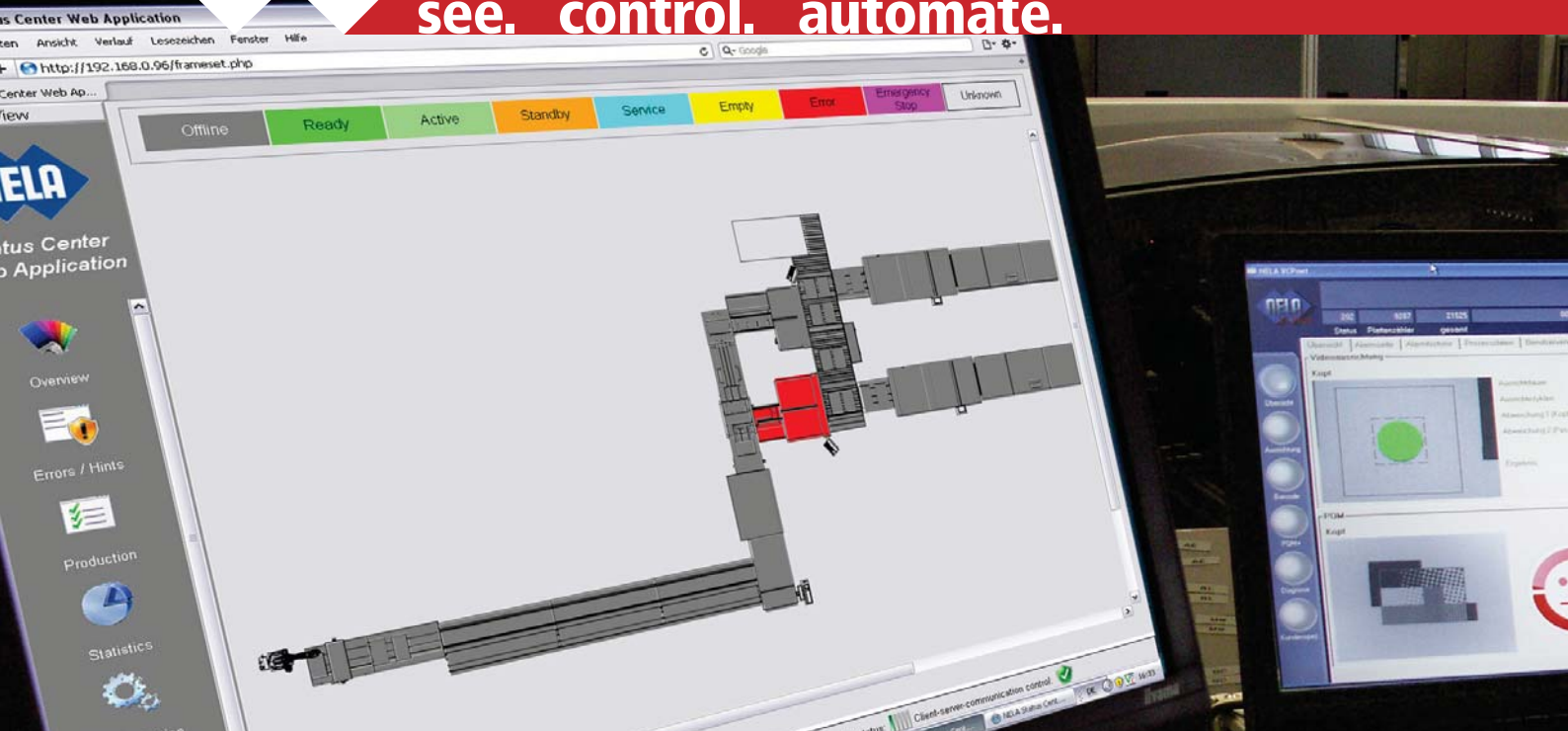




see. control. automate.



NELASoftware

NELA StatusCenter

**Central point of information
for the complete plate processing line**
PC-based or Web-Interface

- Visual status display of all components of the complete plate processing line
- Centralized documentation of all events with date/time
- Statistical evaluation (SPC) possible at any time
- Data export in CSV or HTML format
- Status overview of all components
- Data archive
- Error notification via email or SMS





NELASoftware

The **NELAStatusCenter** provides status reports throughout the processing of printing plates from a central location. The possibility of Internet access results in a maximum of flexibility.

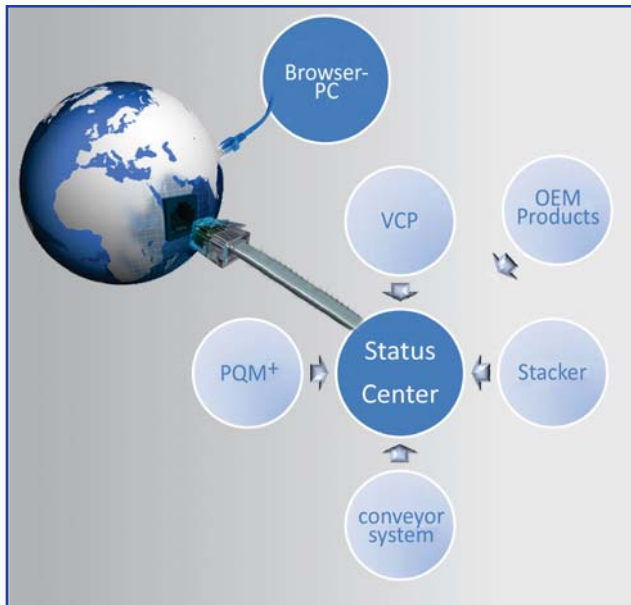
statistics. Production data and logs can be exported for further use.

Access via Internet Browser

With the **NELAStatusCenter** web interface you get a visualization of data on a standard Web browser from any PC on the Internet or intranet. This means you are no longer have to provide a firm location for the control monitor. Access controls provide the necessary security.

Simple Installation

The integration of **NELAStatusCenter** in existing configurations is very simple. Complex wiring is not necessary. Each unit can easily be connected via Ethernet. NELA equipment from year 2001 and later (an appropriate examination provided) can be retrofitted with the **NELAStatusCenter**. This allows existing installations to benefit from the advantages of this system.



All components of a plate processing line may be integrated in the **NELAStatusCenter**. An internet interface provides access through any Internet or Intranet workstation.

Function

The **NELAStatusCenter** monitors all activities of the entire plate processing line from a central point. Status changes and errors are immediately shown on the control panel.

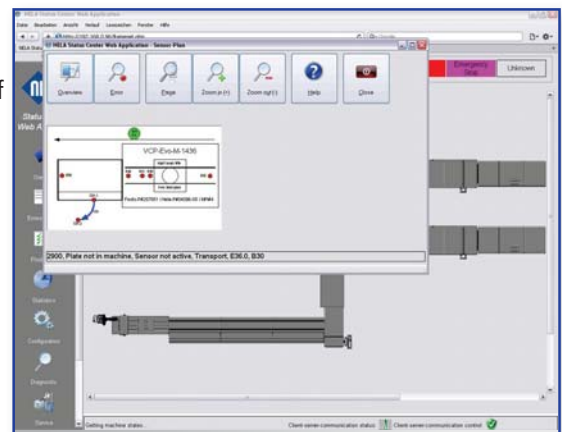
For the operator, this means a continuous and fast control of all components of the plate-making lines. Errors and interruptions of the production are displayed in plain text and set in native language on the control console.

An overview on the **NELAStatusCenter** console shows the schematic structure of the plate line with all important parameters.

For a quick status check, the devices are shown in different colors according to their current status. A simple click is enough to retrieve the details of the current status of a specific device.

Imagesetters, film processors and other devices from third-party companies can also be integrated in the **NELAStatusCenter**, provided that these devices have interfaces that may be configured appropriately.

All data are centrally stored in a SQL database and are always available for analysis and



NELA - Who we are:

The NELA group, consisting of NELA Brüder Neumeister GmbH, NELA USA and NELA Asia, forms one of the largest manufacturer of high-quality optical control devices for industrial applications, process control and automation. NELA Register systems include inline punch-bending machines, both for newspaper and commercial printing and plate automation and transportation systems. With more than 1400 installations around the world, NELA is among market and technology leaders.

As a leader in our industry in Europe, we are also represented on the markets of North and South America and Asia / Oceania. At our headquarters in Lahr/Germany 200 employees manufacture state-of-the-art precision equipment in modern and spacious production facilities.



www.nela.de
e-mail: sales@nela.de

BRÜDER NEUMEISTER GMBH
Gottlieb-Daimler-Straße 15
D-77933 Lahr
Phone +49 (0) 78 21 - 58 08-0
Fax +49 (0) 78 21 - 58 08-62

see. control. automate.

